

# Community Stations Initiative

Community use of empty railway premises



Susan Miles  
Project Officer

AC:RP

Great Malvern, Worcestershire



**Bringing life back to empty station premises**  
by  
leasing them to local, not for profit, use rent free for up to 25 years through a specially formulated tripartite lease which extends beyond the station lease.



Oakham



Stamford



Spalding



Gt. Malvern

# Why Are The Station Premises Empty ?

- Not required for rail service provision?
- Unused in recent memory?
- Deterioration of the premises?
- Previous lettings not succeeded?
- Not viable for commercial use?

Footfall

Insufficient Parking

Renovation Costs

Fees

???

# Premises

Network Rail own the infrastructure of the national railway system - buildings, land and track.

In the main, regional Train Operating Companies (TOC's) then lease the infrastructure on a franchise basis for varying periods of time to provide the required rail service and station facilities.

Network Rail and TOC's have acknowledged that there is a need to find a use for those railway premises which remain empty and for which they have not been able to find a commercial tenant.

They must seek to maximise the commercial return on their property portfolio for the wider benefit of the railway, **but there are some properties that are simply unattractive to commercial tenants.**





Spalding  
Lincolnshire



  
Spalding

Man and woman standing next to the car

KH54 VSG

CAPITAL PRINT

01406 423487

Local Radio for Local People

South Holland Radio

SPALDING MOBILITY CENTRE

01775 722786

# Regenerating the station building

**Re-opening disused access which now leads to the shopping centre.**



Creating new space.

Putting a presence on the station



Providing:-

Internet cafe open  
7.30am -9 pm

Meeting Room for  
Community use.

Three studios from  
which to broadcast,  
including a training unit.

Reception/information  
base

In lieu of rent, a community and not-for-profit group would be expected to renovate the premises to meet their needs. They could be eligible for major grants.



Melton Mowbray  
Leicestershire







Oakham  
Rutland

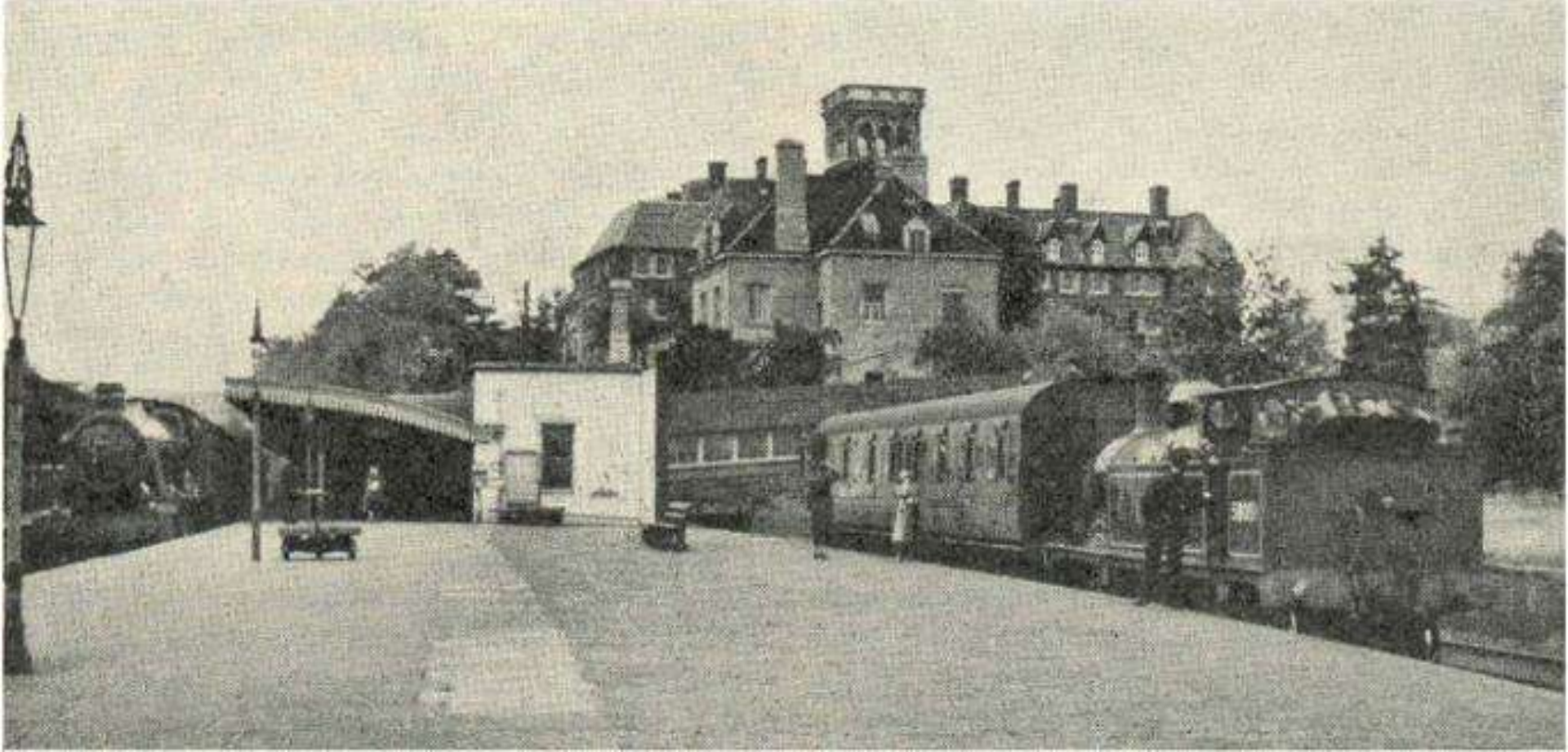
Community Tenants  
[www.studentforce.org.uk](http://www.studentforce.org.uk)

**Student  
Force**  
for Sustainability





Edge Hill, Liverpool



Great Malvern  
Worcestershire



PAINT

Paper & Card

OFFICE

School Bag

# WHISTLE STOP STORES

## Playgroup Supplies

A training base to support  
those with learning  
difficulties

Tenant  
Worcester County Council





Cromford



Etchingham



Stamford



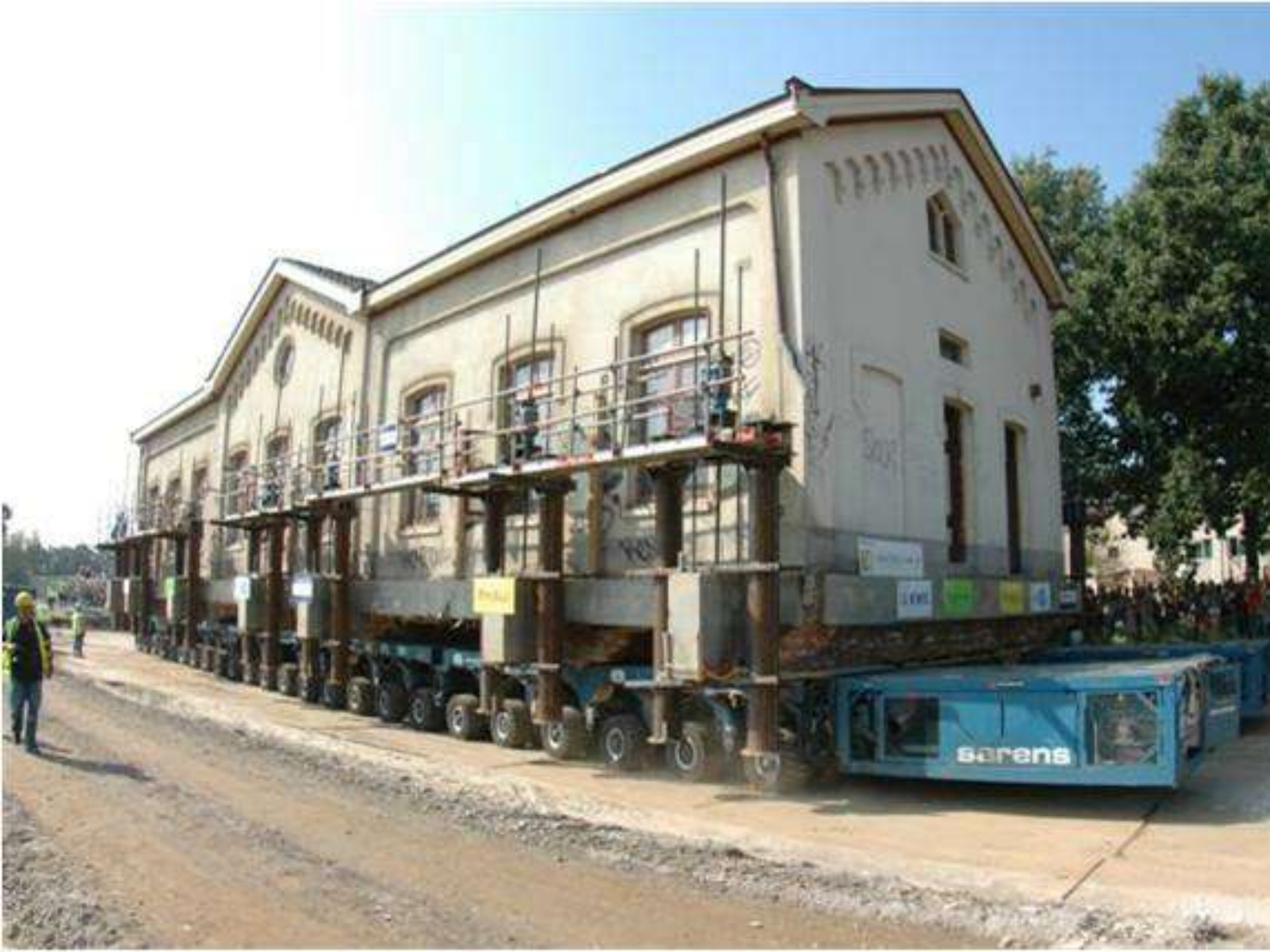
Ridgmont

This is a project that started regionally  
and is now accepted as national policy.

It is being piloted in Scotland

and

is now interesting Europe



sarens

# Contact

*Community use of empty railway premises.*

ACoRP, The Association of Community Rail Partnerships, is a national federation of over 60 local community rail partnerships spread across the UK. It is a not-for-profit organisation which aims to provide impartial support, advice and guidance to anyone who is involved with rural and local rail services, including community groups, town and parish councils, rural transport partnerships and small businesses.



## Community Stations Initiative

Susan Miles MBE  
ACoRP Project Officer

Tel: 01952 811880  
Mob: 07866 295 377  
E-mail [susan@acorp.uk.com](mailto:susan@acorp.uk.com)

[www.acorp.uk.com](http://www.acorp.uk.com)